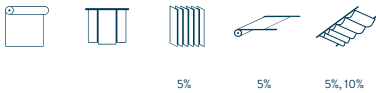


## MULTISCREEN 1%, 5%, 10%

- ・眩しさを最小限に抑える優れた光制御を備えたスクリーン生地
- ・すべての建物の向きに合わせて、3つの開放性要素を保持
- ・低排出（化学物質）製品のGreenguard®認証

### アプリケーション



### 織物表示

	1%	5%	10%
	半透明		
	64% PVC, 36% グラスファイバー		
	440 g/m <sup>2</sup>	410 g/m <sup>2</sup>	350 g/m <sup>2</sup>
	0.55 mm	0.55 mm	0.47 mm
	245 cm	245 cm	315 cm
	250 cm	8.9 cm, 12.7 cm, 250 cm	320 cm

### 洗濯表示



### 技術特性

	7-8
	難燃性
	ワークステーションに最適化
	全方位性
	湿度の高い場所でも使用可能
	デジタル印刷
	Greenguard
	特別色 10'000 m
	溶着可能

### 難燃性

C-s3,d0 (EN 13501-1)  
 Class 1 (BS 476)  
 Class 1 (UNI 9176/77)  
 B1 (DIN 4102-1)  
 M1 (NF P 92-503/5/7)  
 Type B (BS 5867-2)  
 NFPA 701



Multiscreen 1%, 5%, 10%

光学および太陽係数 (± 5%, DIN EN 410)



Multiscreen 1%							
Colour	$T_V$	$T_S$	$R_S$	$A_S$	$T_{UV}$	$F_C$	$g_{tot}$
0702	11.8	14.0	47.0	39.0	0.00	0.64	0.46
0730	5.6	6.0	25.0	69.0	0.01	0.79	0.57
3001	2.8	3.0	9.0	88.0	0.01	0.89	0.64

Multiscreen 5%							
Colour	$T_V$	$T_S$	$R_S$	$A_S$	$T_{UV}$	$F_C$	$g_{tot}$
0202	20.6	21.0	69.0	10.0	0.05	0.50	0.36
0207	15.8	17.0	54.0	29.0	0.05	0.60	0.42
0220	19.1	22.0	62.0	16.0	0.06	0.54	0.39
0707	12.7	15.0	37.0	48.0	0.06	0.71	0.50
3001	5.6	6.0	10.0	84.0	0.05	0.89	0.62
3006	5.3	5.0	7.0	88.0	0.06	0.89	0.63
3030	5.4	6.0	5.0	89.0	0.04	0.89	0.64

Multiscreen 10%							
Colour	$T_V$	$T_S$	$R_S$	$A_S$	$T_{UV}$	$F_C$	$g_{tot}$
0202	28.7	29.0	63.0	8.0	0.11	0.54	0.39
0207	23.2	25.0	53.0	22.0	0.11	0.61	0.44
0220	26.4	29.0	58.0	13.0	0.10	0.57	0.41
0707	18.3	21.0	34.0	45.0	0.11	0.74	0.53
3001	10.2	10.0	10.0	80.0	0.10	0.89	0.64
3006	9.3	10.0	6.0	84.0	0.12	0.89	0.64
3030	10.8	10.0	5.0	85.0	0.10	0.89	0.64

$T_V$  Visible light transmission

$R_S$  Solar reflectance

$T_{UV}$  UV transmission

$g_{tot}$  Total g-value

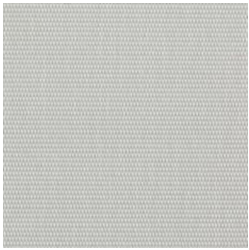
$T_S$  Solar transmission

$A_S$  Solar absorption

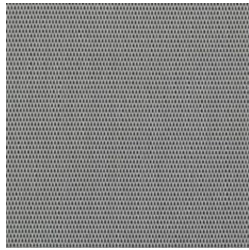
$F_C$  Shading factor

Fc + gtot: ガラスで計算した値: 0.72 / Ug = 1.6 W/m<sup>2</sup> K, DIN EN 13363-1

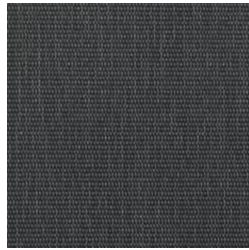
## Multiscreen 1%, 5%, 10%



0702 (1%)



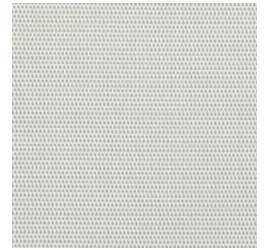
0730 (1%)



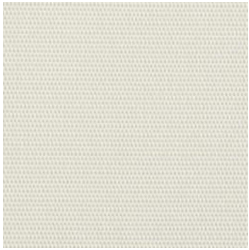
3001 (1%)



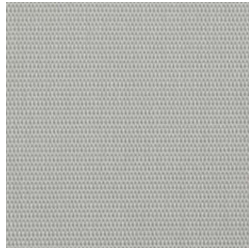
0202 (5%)



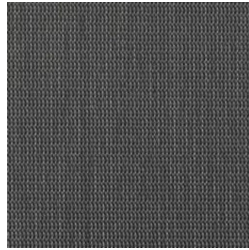
0207 (5%)



0220 (5%)



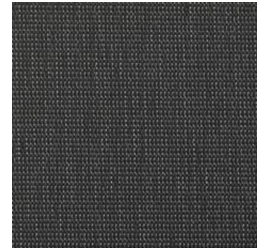
0707 (5%)



3001 (5%)



3006 (5%)



3030 (5%)



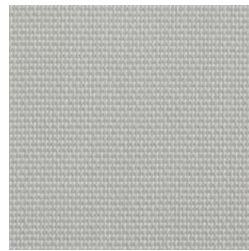
0202 (10%)



0207 (10%)



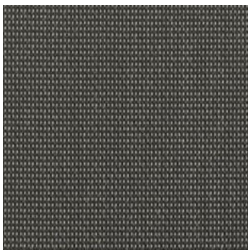
0220 (10%)



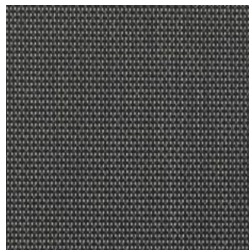
0707 (10%)



3001 (10%)



3006 (10%)



3030 (10%)